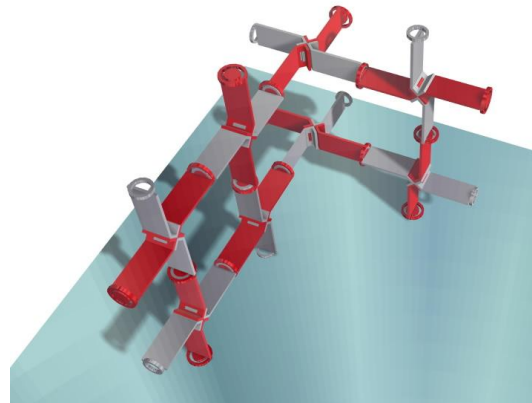
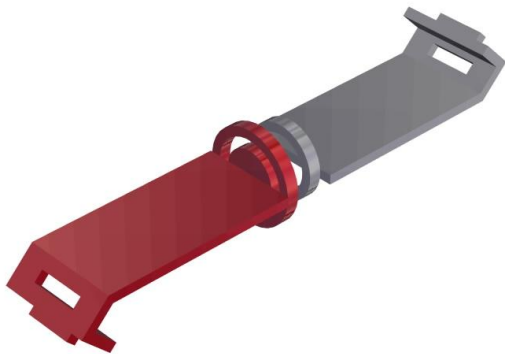


Ontwerpstadia:

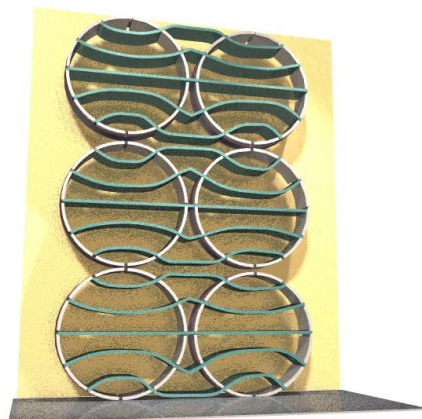
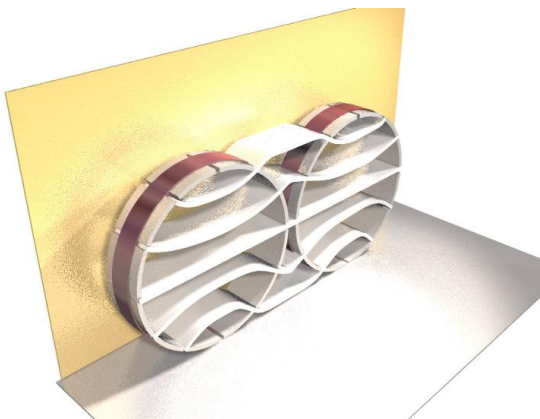
<b>1</b>	<b>VOORSTUDIES</b> .....	<b>1</b>
<b>2</b>	<b>SELECTIE</b> .....	<b>2</b>
<b>3</b>	<b>UITWERKING (DIVERGEREND)</b> .....	<b>2</b>
<b>4</b>	<b>UITWERKING (CONVERGEREND)</b> .....	<b>4</b>
<b>5</b>	<b>DEFINITIEF ONTWERP</b> .....	<b>5</b>
<b>6</b>	<b>ONTWERPVARIANTEN</b> .....	<b>5</b>

## 1 Voorstudies

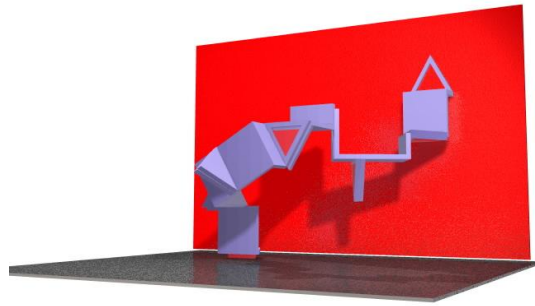
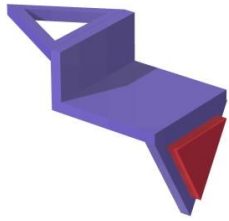
Variant 1



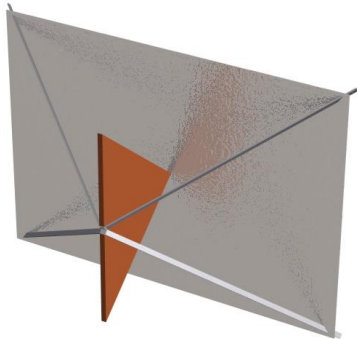
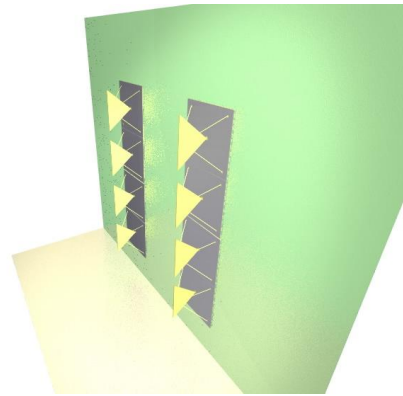
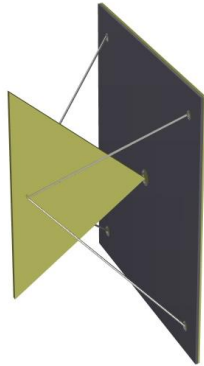
Variant 2



Variant 3



Variant 4

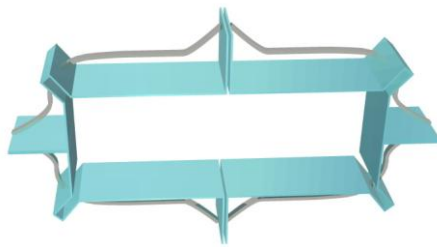
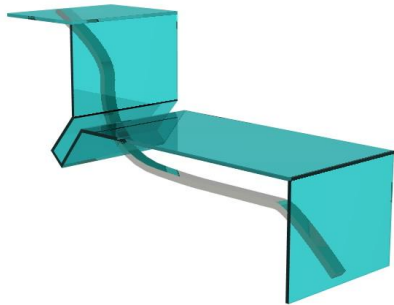
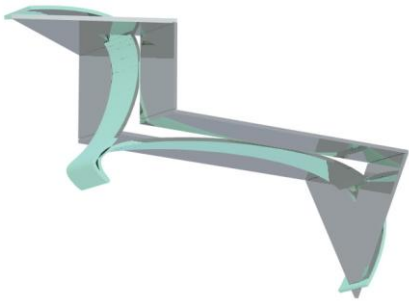
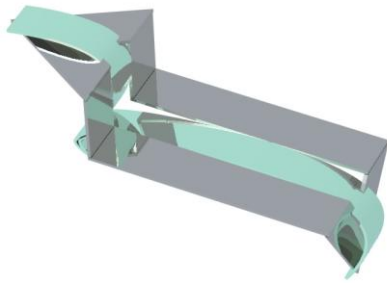
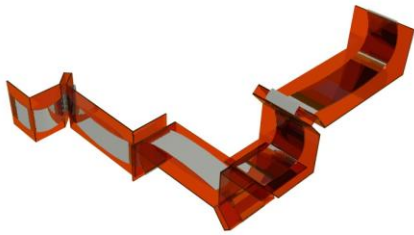
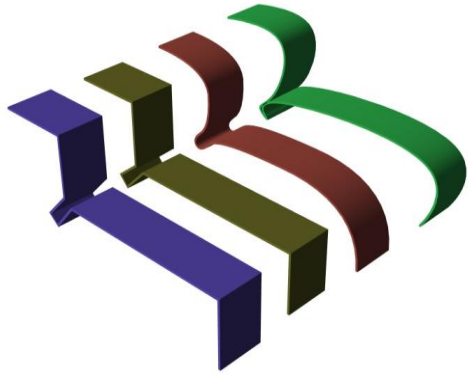


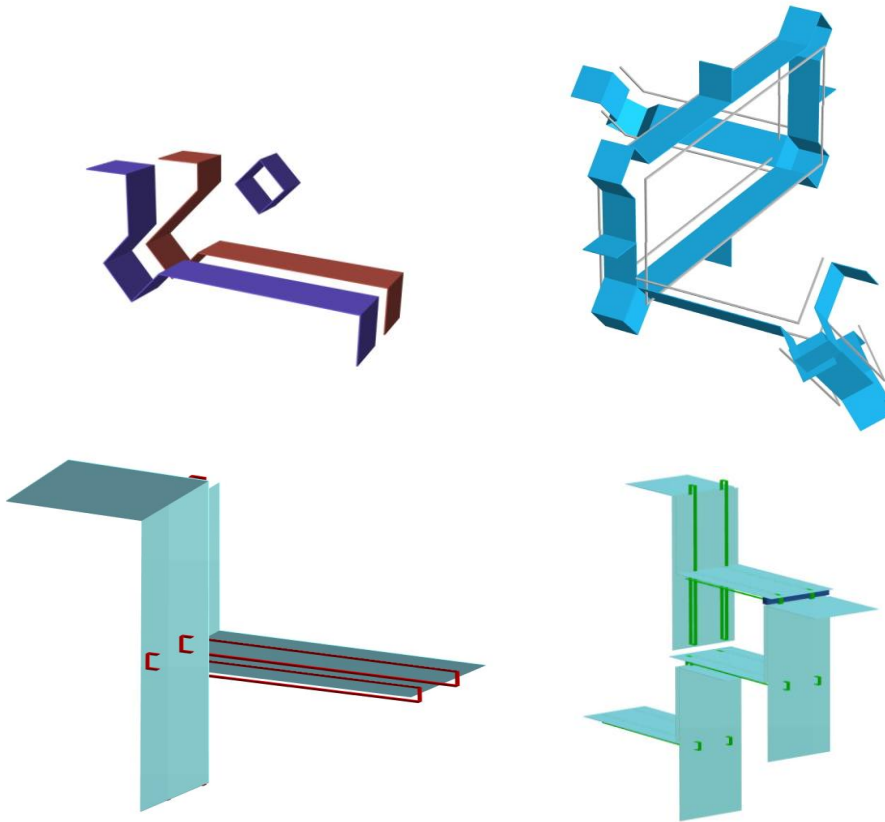
## 2 Selectie

In overleg met Paul is variant 3 geselecteerd voor verdere uitwerking

## 3 Uitwerking (divergerend)

Hierbij heb ik onderzocht hoe de modules samengesteld kunnen worden en hoe ze gekoppeld kunnen worden. Hierbij is vrij breed gevarieerd maar uiteindelijk is besloten terug te gaan/te blijven bij het oorspronkelijke idee.

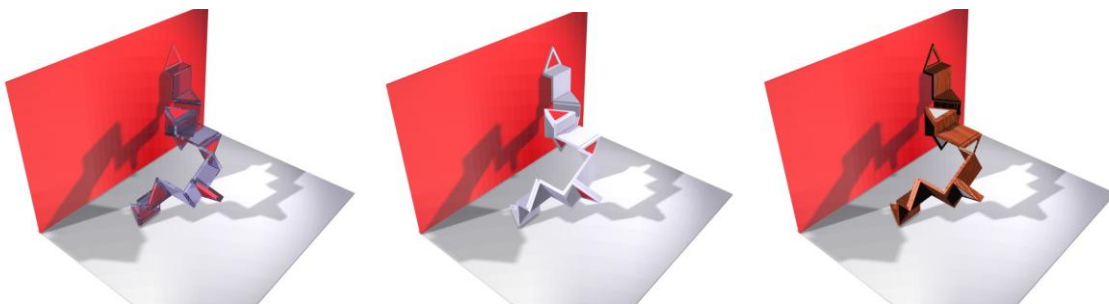




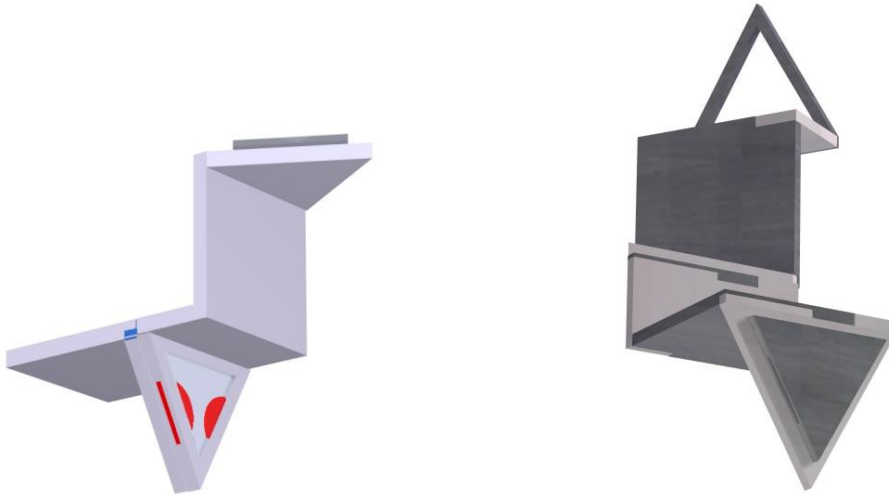
## 4 Uitwerking (convergerend)

de naam: C:ME (“see me”)

Hier heb ik in eerste instantie gekeken naar de uitwerking van de materiaalkeuze

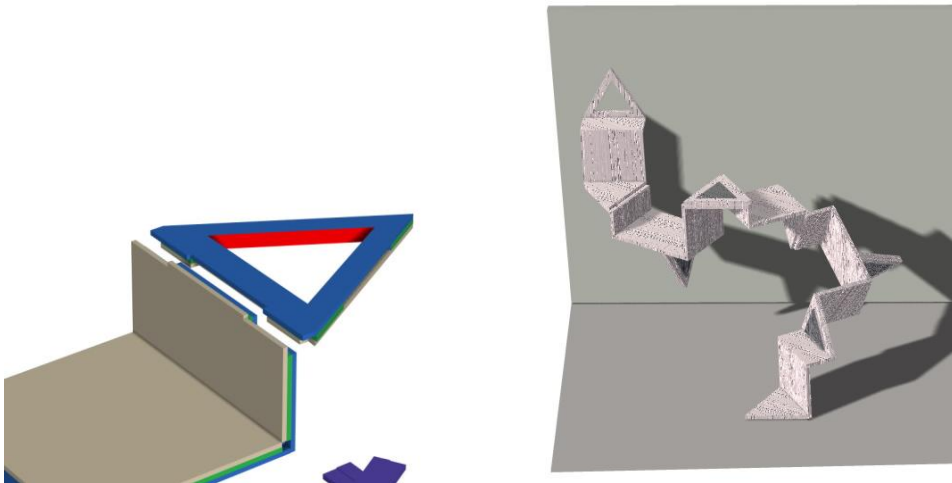


Daarna heb ik me geconcentreerd op de verbindingen:



## 5 Definitief ontwerp

Hieronder de verbinding en de definitieve samenstelling



## 6 Ontwerpvarianten

Ontwerpvarianten worden verkregen dmv vertakkingen en kleurvarianten

